

Oklahoma Statewide 6" gsd

The first statewide leaf-off imagery in 30 years

Muskogee County

Tim Bohn

April 15, 2025

Haskell County

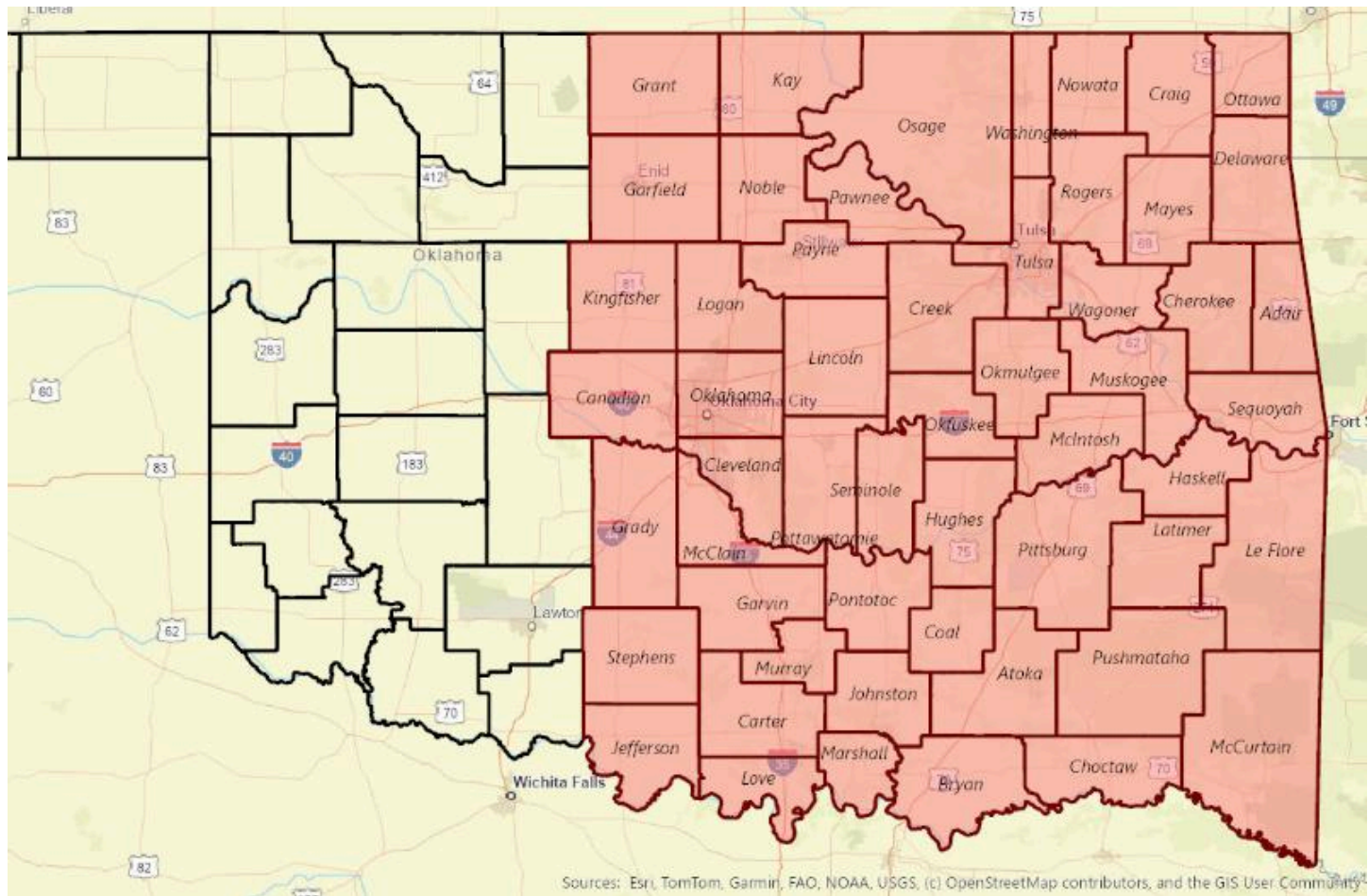
Agenda

- Program overview & schedule
- 2025 coverage completed
- Leaf-Off Imagery
- Near Infrared

- Ground Control Survey & QA
 - Tracker
 - Early access - hosted a few days after flight
 - SurCheck – final product
 - Pilot project
 - Data access upon completion
-

Program Overview

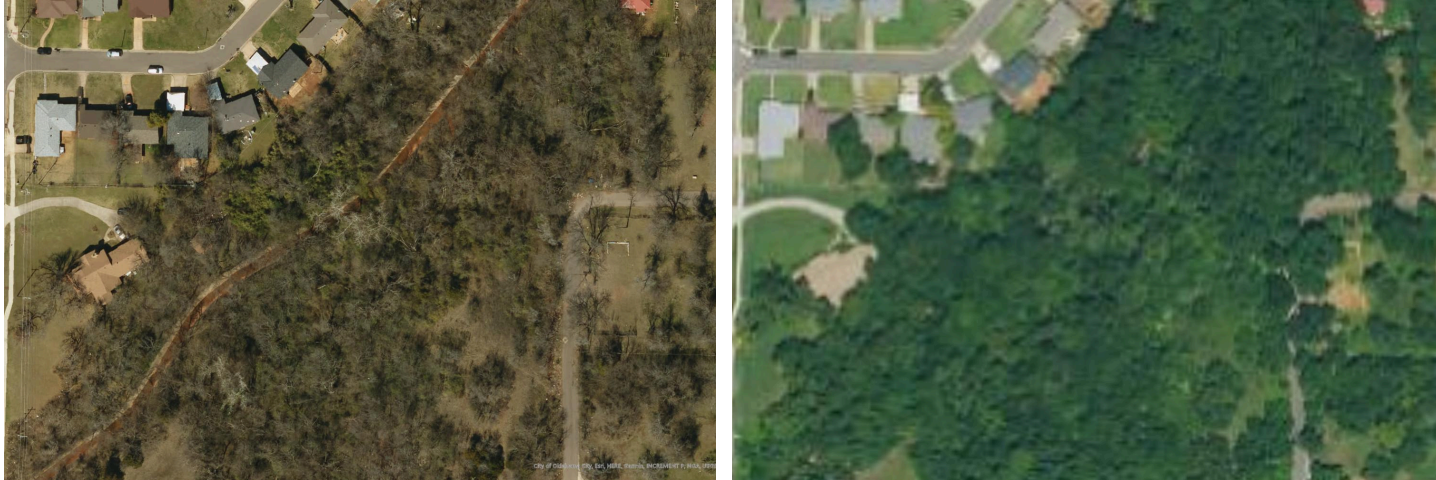
- New 6-inch pixel aerial photography acquired in 2025 - 2026
- **6" horizontal accuracy**
- Leaf-off conditions
- Four-band: Natural color RGB + Near infrared
- Public domain (no license or software needed)



2025 Flight

- 63% of tiles incl 1 mile buffer
 - 70% of counties (54 of 77)
 - Orig east target was I-35
 - 144,000 accepted exposures
 - Minor re-flights (smoke, cloud, flooding)
 - Acquired Feb 1 - Mar 17
-

Why is leaf-off imagery so important?



Late winter 2025 (left) vs USDA NAIP

What is Near IR and how can it be used?

- Commonly referred to as "false color"
- **Preliminary data only** ----->
- Vegetation is red
 - Intense red is dense or vigorously growing
 - As health decreases, becomes light red or pink
- Bare soil white-blue-green; darker = more moisture



OK color IR sampling

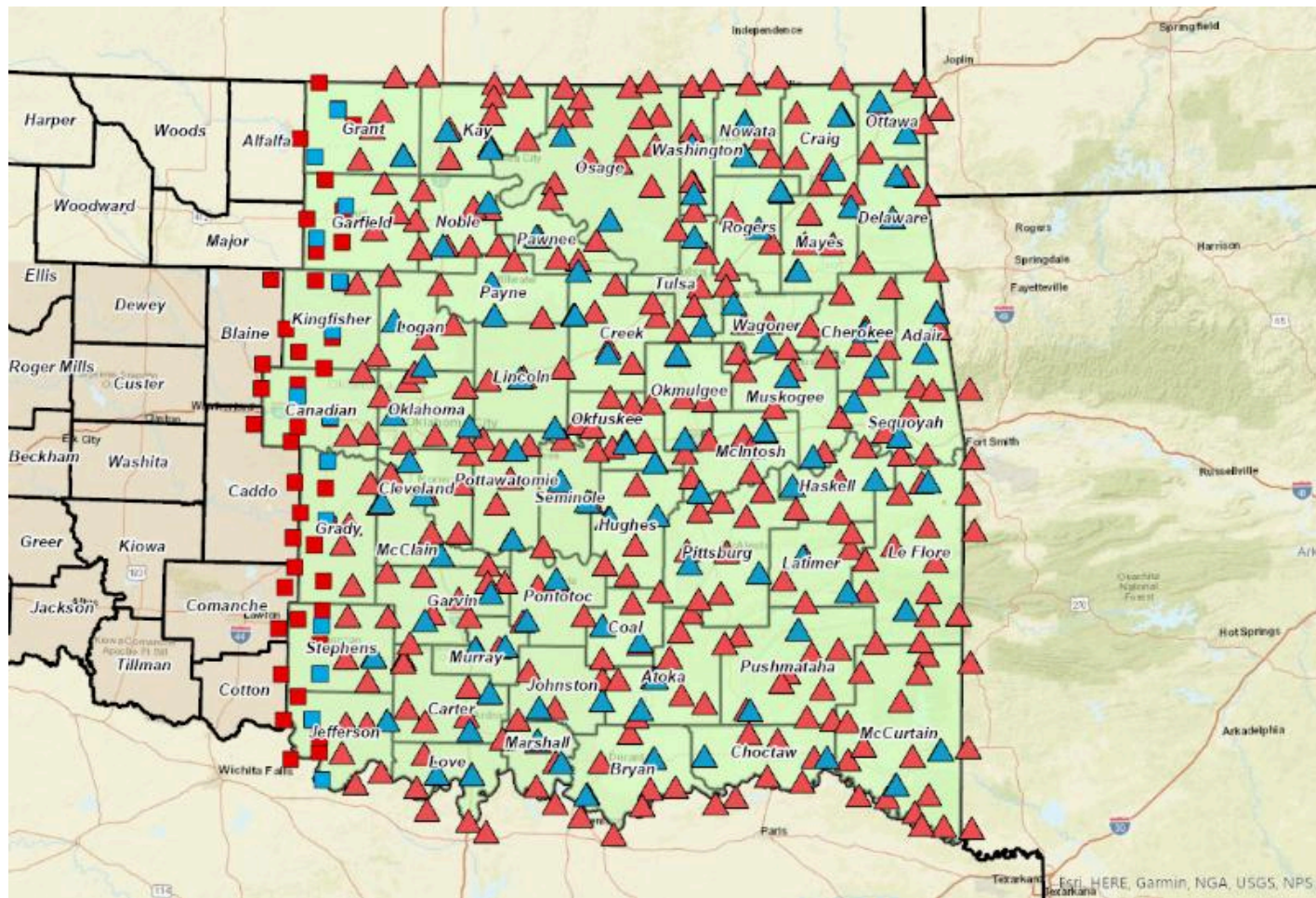
- Water - various shades
 - Black = clean
 - Pale blue = heavy sediment
-

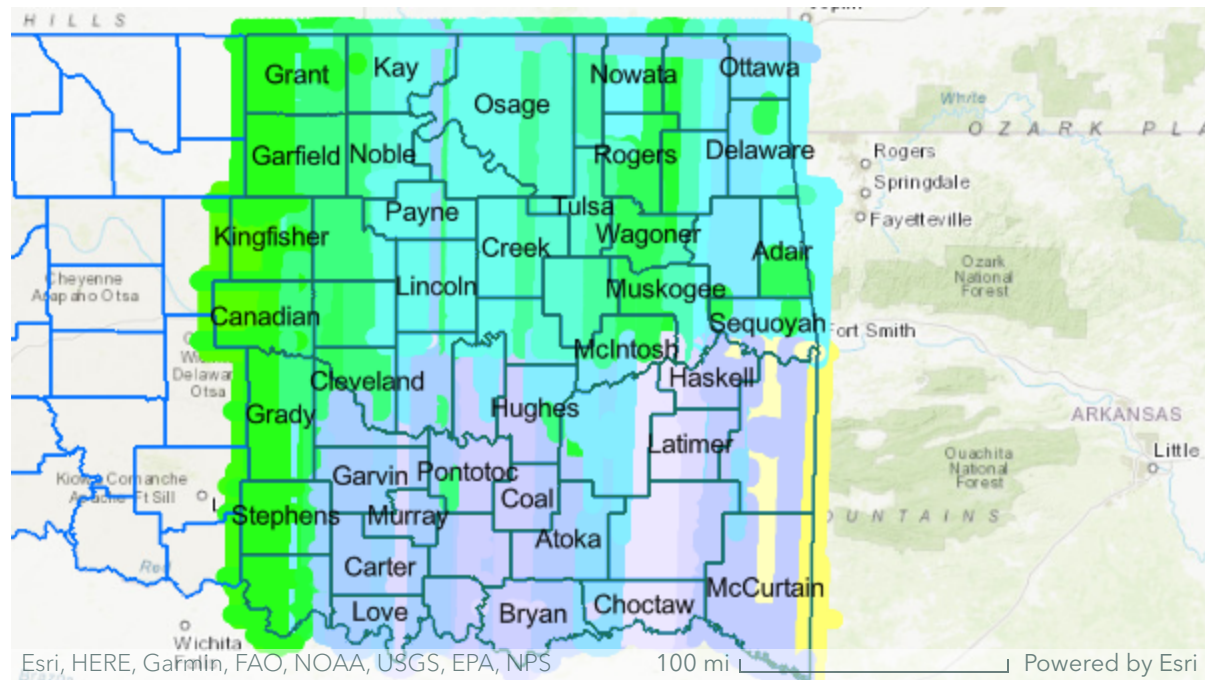
Ground Control Survey & Independent QA

Eastern portion only

- 515 Survey points collected
 - 402 Control
 - 113 Independent QA (min 2 per county, 10 miles apart)
 - 50-60 targeted pre-flight

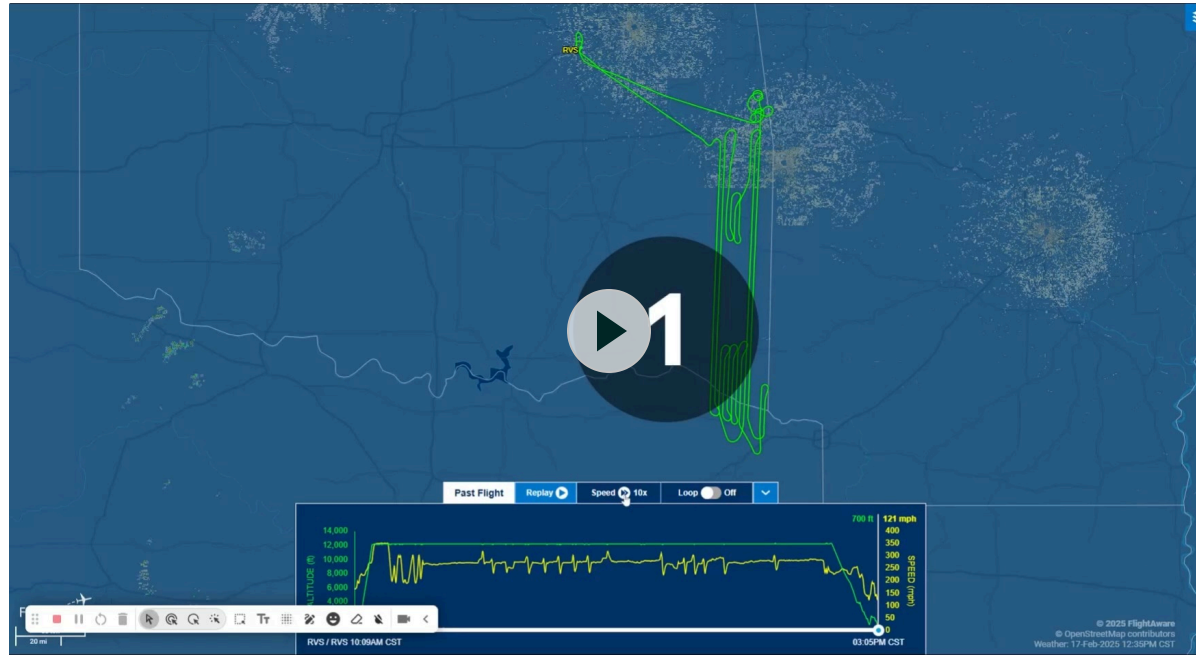






Date of Flight Acquisition - 2025

Supplemental lines added for tall buildings



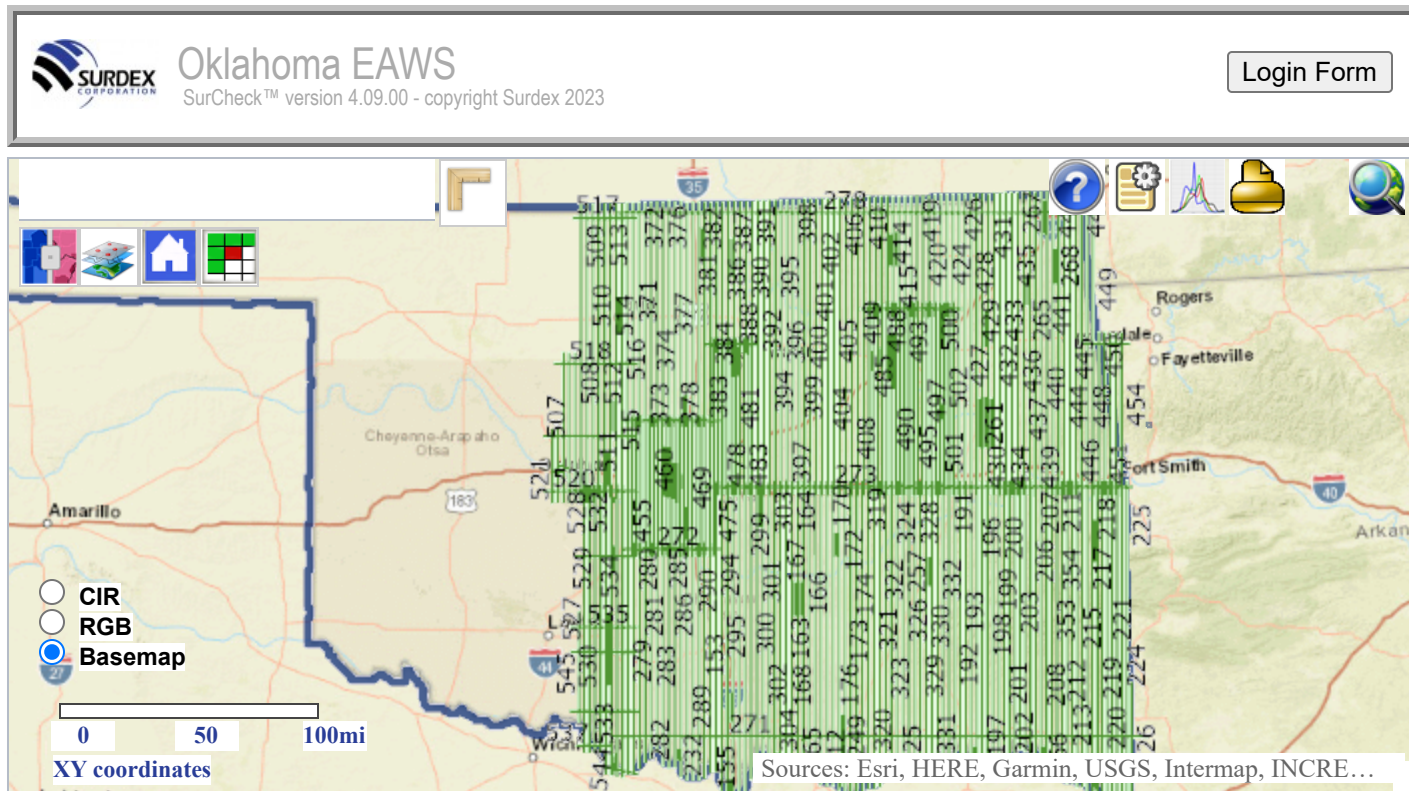
Flight Acquisition Demo

Preliminary Data after Flight



EAWS - 5 to 15 days after acquisition - still preliminary

SurCheck Online Inspection Tool



Redline capability

Pilot Project



Pilot-Cameron OK (LeFlore county)

Data Distribution

- Will be publicly accessible for download starting Fall 2025
- Tiles ~4,000' x 4,000' wide, USNG naming schema
- Tile size ~13mb each - very user friendly!
- FTP access <https://okmaps.onenet.net/index.html>

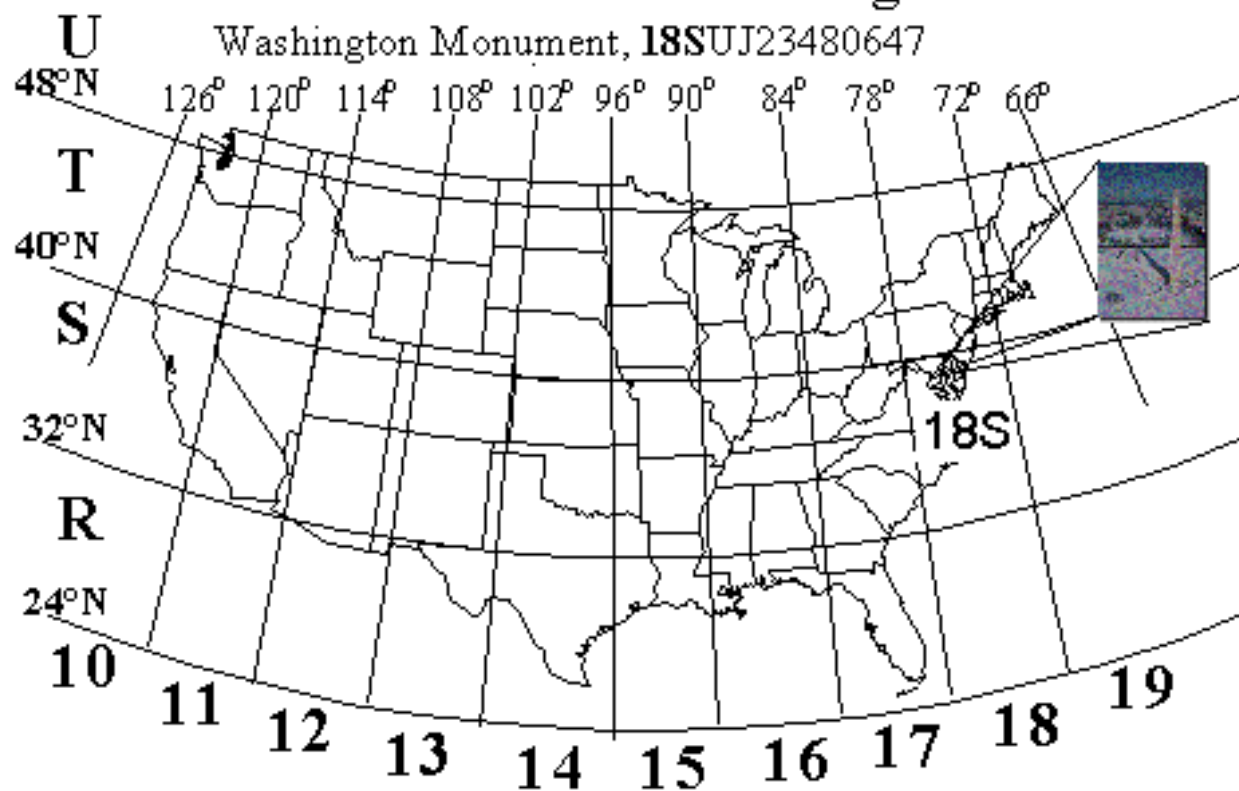


US National Grid

Example: 15S UU 5988

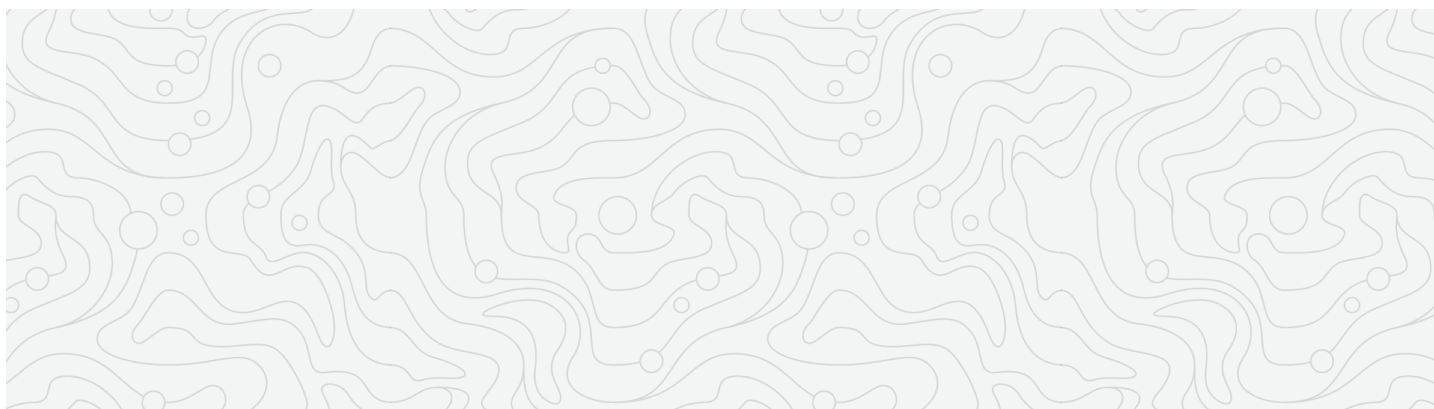
- Zone 15
- Grid UU (100km x 100km index)
- 5598 (1000 meter location)

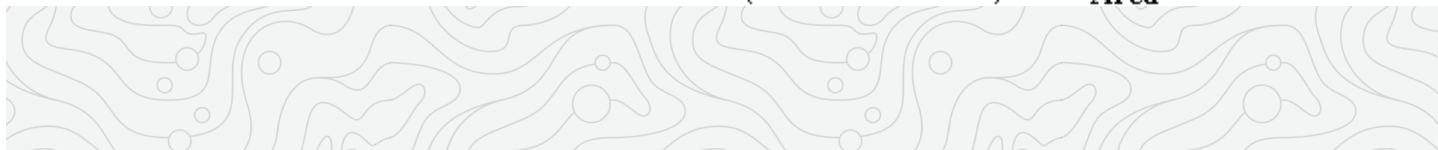
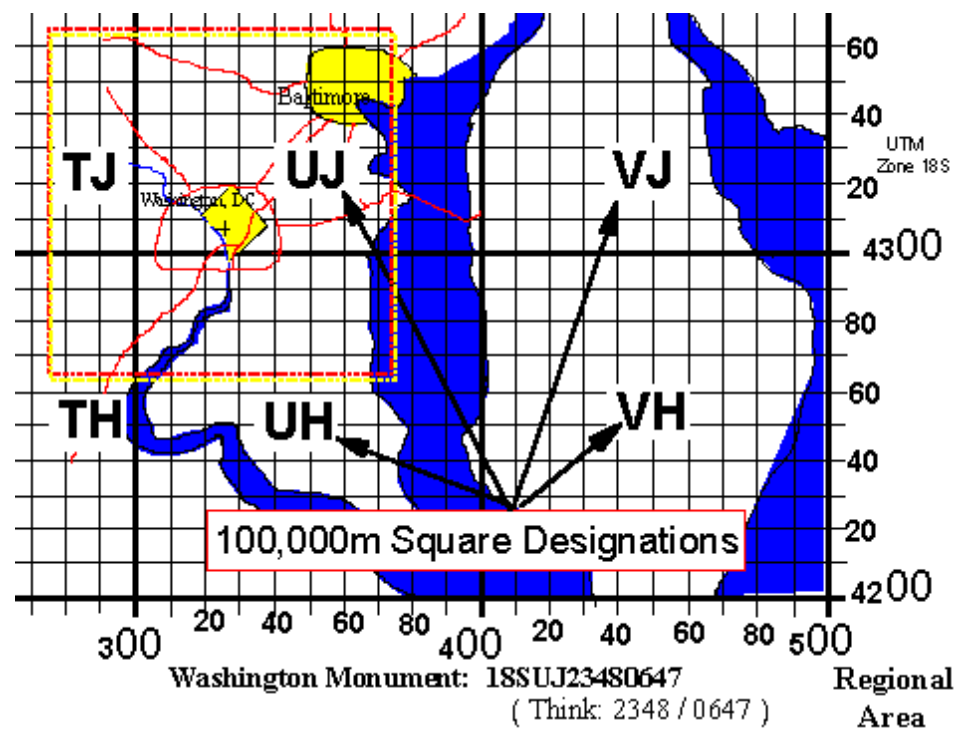
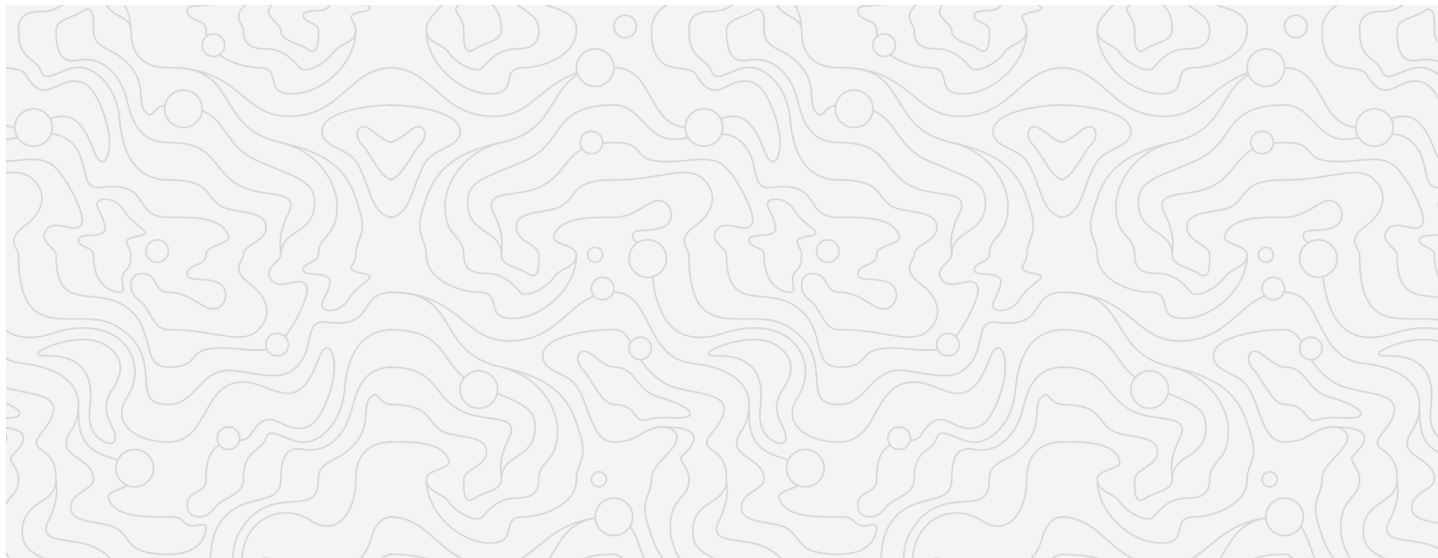
UTM/MGRS Grid Zone Designations



© 1998 N.G. Terry, Jr.

Find your UTM zone





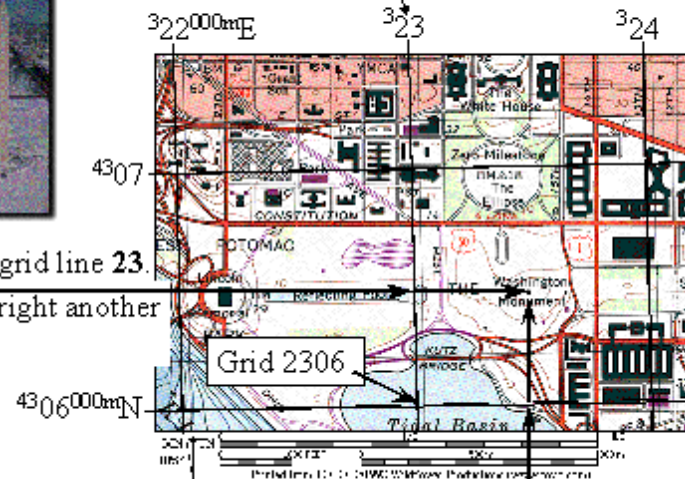
Reading Grid Coordinates... “Read RIGHT, Then UP.”

The Washington Monument is located at grid **23480647**
(think **23**48 / 0647)



Read **RIGHT** to grid line **23**.

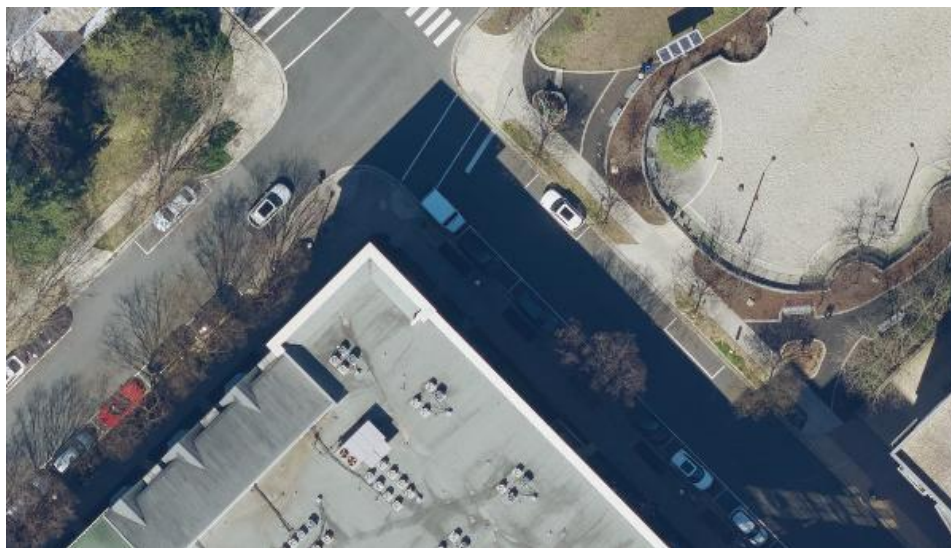
Then measure right another
480 meters



Then, read **UP** to grid line **06**, and measure up another 470 meters.

Buyup Opportunities

Upgrade options for 1.5" and 3"



3" gsd



1.5" gsd

Contact me with questions!!

More samples on display in our booth - stop by and say hello!



SURDEX
a Bowman company

Tim Bohn, CP PMP
Vice President, Energy
Business Development



Bowman.com